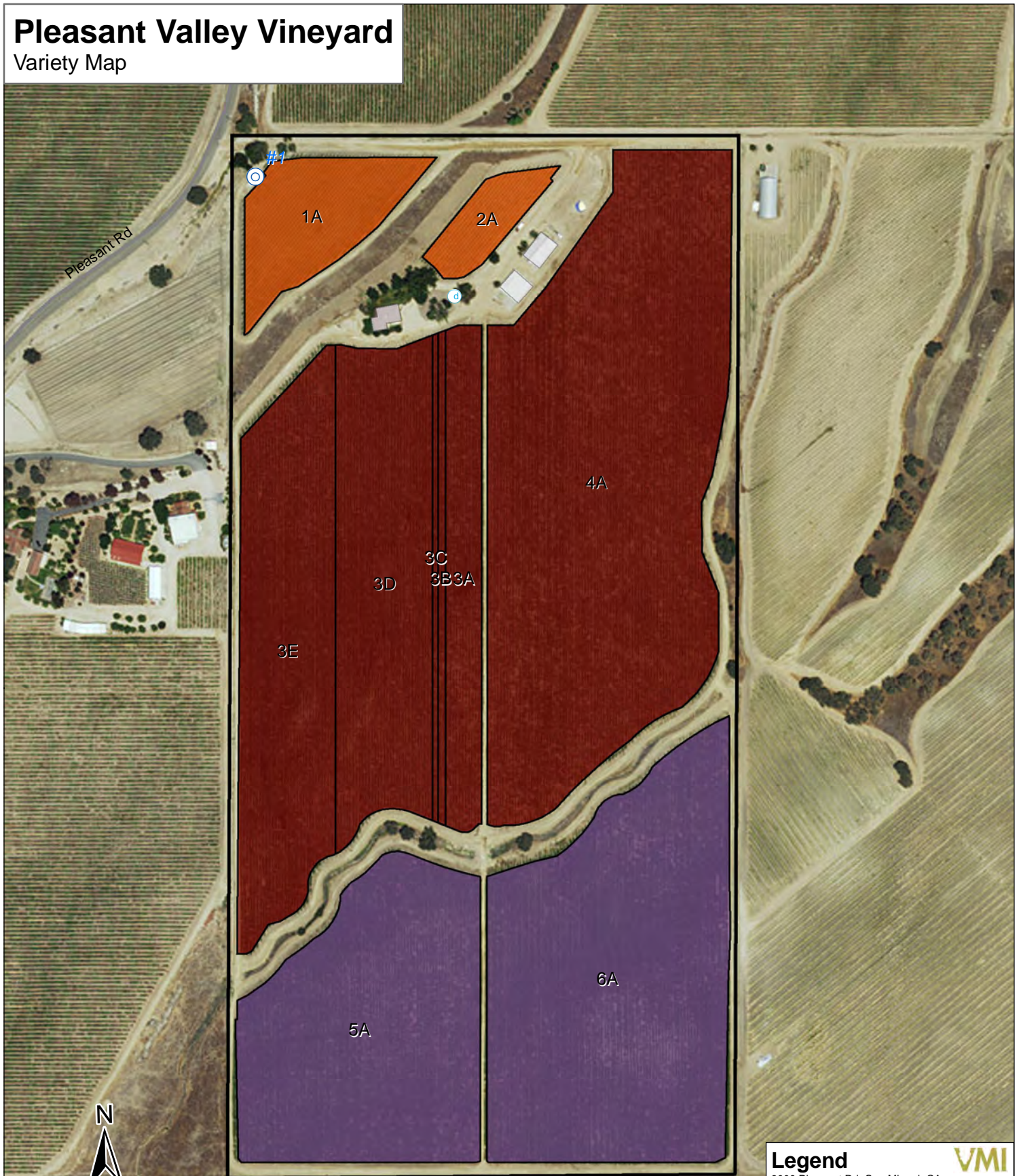


Pleasant Valley Vineyard

Variety Map



Mike Bobbitt & Associates
 (805) 466-2920
 www.mikebobbitt.com
 06 Jul 2016

Legend

3000 Pleasant Rd. San Miguel, CA
 County: San Luis Obispo
 Williamson Act: Yes

- Domestic Well
- Irrigation Well
- Approx. Property Line
- Cab Sauv 37.75ac
- Syrah 22.71ac
- Zinfandel 3.7ac
- Vineyard Blocks 64.16ac
- Non-planted 14.94ac
- Total Acres 79.10ac**

Block	Variety	Clone	Rootstock	Spacing	Vines	Acres	Planted	Block	Variety	Clone	Rootstock	Spacing	Vines	Acres	Planted
1A	Zinfandel	Winecreek	110R	8X6	2,443	2.69	1999	3E	Cab Sauv	07	5C	8X6	7,010	7.72	1999
2A	Zinfandel	Winecreek	110R	8X6	917	1.01	1999	4A	Cab Sauv	07	5C	8X6	17,533	19.31	1999
3A	Cab Sauv	07	5C	8X6	2,579	2.84	1999	5A	Syrah	Shiraz	110R	8X6	8,626	9.5	1999
3B	Cab Sauv	07	5C	8X6	418	0.46	1999	6A	Syrah	Shiraz	110R	8X6	11,995	13.21	1999
3C	Cab Sauv	07	5C	8X6	418	0.46	1999	Total Planted					13,093	64.16	
3D	Cab Sauv	07	5C	8X6	6,320	6.96	1999								

Disclaimer: The information herein was compiled from multiple publicly available sources, is considered reliable and the most current available; it is, however, provided without warranty, either express or implied. No liability is assumed either directly or indirectly. Contact a licensed Land Surveyor for any questions regarding legal property boundaries